



SAIL  
LIFTS

WWW.SAILLIFTS.COM



# WORLD-CLASS ELEVATORS EVERYDAY CONVENIENCE

European Standards  
Bespoke Designs  
Accessible Innovation

Who are  
we?

## *Transforming homes with Elegant Elevators..*

Sail Lifts is the epitome of refined vertical movement. Far beyond a conventional elevator, every Sail Lift is envisioned as an elegant extension of your beautiful home - an aesthetic moving space that blends with your interiors and elevates lifestyle. Each design is curated to enhance beauty, exude prestige and become a statement of taste within your residence.

Crafted with Uncompromised Safety, Precision Engineering, and adherence to European EN81-20 Safety Standards, we deliver enduring Reliability and Performance. From the right metallurgy to seamless motion and intelligent electronics, we unite Technology with Timeless design, offering not just movement between floors, but a sophisticated Living Experience and Peace of Mind.





an elevator is not just a machine..  
its a

# ROOM IN YOUR HOME

Sail Lifts believes an elevator should be more than a stainless-steel box inserted into a home. It should be a natural extension of your living space—an element that complements your interior, not disrupts it. That's why we design lifts that blend aesthetics, elegance, and engineering, ensuring your elevator feels like it truly belongs in your home rather than standing out as an industrial add-on.

At Sail Lifts, convenience and safety are at the core of every system we build. Our elevators are designed for effortless use by every member of the family, including children and elderly users. With over 50 advanced safety parameters, automatic rescue devices, and complete privacy-focused features, we ensure that every ride is smooth, secure, and reassuring. Our lifts are built to empower safe, independent mobility for all.

We take reliability to the next level with 24x7 support and IoT-enabled preventive monitoring, giving homeowners real-time insights and proactive service. Sail Lifts are crafted to be low-maintenance without compromising performance, helping you enjoy uninterrupted comfort and confidence. With Sail Lifts, your home gains more than an elevator—it gains a thoughtful, seamless, and safe vertical living experience.

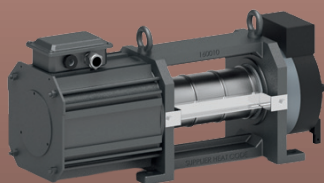
*Why  
Sail?*



Sail Lifts offers a multiple elevator technologies like traction geared, traction gearless, hydraulic, belt-driven, rope-driven systems, each engineered for smooth performance and long-lasting reliability.

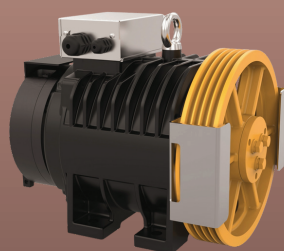
We also offer Self-Supporting hoist-way structures that eliminate the need for heavy Civil modifications. With pit-less or minimal-pit installation options, we ensure effortless integration into new or existing homes, making premium vertical mobility accessible without compromises.

SAFETY  
BEAUTY  
VARIETY



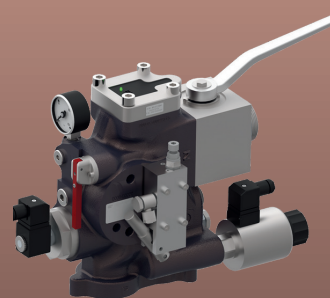
## Belt-Driven Gearless

- Quieter, Smoother
- Steel Reinforced Belts
- Higher Energy Efficiency
- Lowest Maintenance
- Silent Homes



## Rope-Driven Gearless

- Smoother, Stronger
- High Tensile Ropes
- Higher Longevity
- Easy Maintenance
- Higher Travel Heights



## Hydraulic Powered

- Quieter, Smoother
- Heavy Load Bearing
- Minimal Civil Works
- Budget Friendly
- Energy Efficient

Machine Room Less / Pitless



Multiple Safety Features, Smooth Operation, Low Maintenance, and

# WORRY-FREE, what not?

Every Ride is Completely Effortless and Secure

## AUTOMATIC RESCUE DEVICE

In case of power failure, it enables travel to the nearby floor, opens the door and then shuts down.

## EMERGENCY STOP AND ALARM

If the passenger experiences any technical hazard, unusual jerk can use Emergency Stop and Alarm. In case of any Fire, Medical Emergency or feeling trapped in unsafe situations without personal communication devices can resort to emergency alarm.

## ZERO VIBRATION

Our VVVF (variable voltage variable frequency) drives enable smooth acceleration and deceleration and avoids sudden jerky movement.

## LOW POWER CONSUMPTION

Single-Phase motors to reduce overall power consumption, which will cost less than Rs. 500/- towards the additional usage of lift.

## WHEEL CHAIR COMPATIBLE

Combination of Sensors and VVVF drive ensures millimeter level precision landing to ensure smooth entry and exit of wheel chairs.

## UPS & BATTERY POWER BACKUP

In case of longer power outages, UPS + Battery combination will support elevator operations for upto 2 hours. (Sudden power outages is handled by ARD\*, both work in tandem).

## BIOMETRIC / RFID ACCESS CONTROL

Biometric Access Control to restrict unauthorized elevator usage by outsiders, can restrict specific floors like terrace/underground etc for specific users like Kids, Maids etc.

## IoT PREVENTIVE MONITORING

Real-time monitoring of elevator's operational parameters (like speed, load, sensor status, door operations, power fluctuations etc) to enable preventive maintenance, improve safety and reduce overall maintenance cost. In case of sudden emergency, system will trigger automatic SMS followed by calls to 3 individuals, followed by call to nearest Fire Service Station if individuals do not respond.

## ANDROID BASED CONTROL

Elevator's operational parameters (like Speed, Load, Sensor status, Door operations, Power fluctuations and more) are continuously monitored to enable preventive maintenance, improve safety, avoid sudden larger issues and reduce overall maintenance cost.



# big fish

## SERIES

LEGACY  
LUXURY

# OCEAN

## SERIES

A Personalized Luxury. A masterpiece. Its more than a choice.

Personalized design, Unparalleled Safety, Intelligent Operating features and Superior Product Construction, thoughtfully crafted to offer a high-end luxury to mirror your Identity and taste.

A fully customizable and perfectly safe vertical mobility solution that blends form and function to offer best quality at smart pricing choices.

Its an all-round elevator with energy efficient drive precision, higher architectural flexibility and variety of decorative styles.

### Features List

### Big Fish Series

### Ocean Series

Segment	Luxury	Standard
Size	Customized	Customized
Interiors	Personalized	Standard (multiple options)
Elevator Machine	Imported (Extra Load Bearing)	Imported (Extra Load Bearing)
Motor Mechanism	Gearless	Gearless
Drive System	Belt Driven	Optional (Belt / Rope)
Quality Standard	European EN81-50	European EN81-50
Doors	Personalized	Standard (multiple options)
Door Drives	Imported	Domestic
Warranty	5 years (Motor 10 years)	3 years (Motor 10 years)
Automatic Rescue Device	Built-in	Optional
Lights	Personalized	Standard (multiple options)
Design Guidance	Personalized	Standard (multiple options)
CCTV Camera	Optional	Optional
Guide Rails	Imported	Imported
Magnetic Floor Levelling	Built-in	Built-in
Car & Landing Operating Panel	Touchscreen, Wireless (21"/12")	Glass Panel with Buttons, Wired (21", 12")
Paint	Powder Coated, Custom Metal Designs	Powder Coated
IOT (Preventive Remote Monitoring)	Built-in	Optional
Emergency Power Backup System	Built-in	Optional
Biometric Privacy Access	Built-in (AI)	Optional
Voice Announcer	Built-in	Optional
Mobile App Control	Built-in	Optional



## Technical Specifications

Elevator Type	Home Elevators Commercial Passenger Elevators Goods Elevators.
Speed	0.60 m/s to 2.00 m/s
Capacity	minimum 4 passengers onwards
No. of Stops	G+1 to G+9
Machine Type	Gearless / Geared / Hydraulic
LOP / COP	Buttons on Glass / Acrylic Feather-Touch on Glass / Acrylic TFT Touchscreen (Android) LCD Touchscreen (Android)
Machine Room	With Machine Room Machine Room Less
Pit Requirement	Pitted / Pit-less
Car Dimensions	800 W x 1000 D onwards (in mm)
Car Material	Glass Stainless Steel Mild Steel Custom Decorative Copper / Brass / Bronze
Doors	Centre Opening Sliding Automatic Centre Opening Swing Automatic Telescopic Sliding Automatic Swing Manual
Door Access	Front Entry Front Exit Front Entry Back/Side Exit
Machine	1 Phase 3 Phase
Colors	Black, Gray, White, Red, Green
Ceiling Lights	LED Spot Lights LED Panel Lights Custom Decorative Chandelier





Crafting Comfort, One  
Piece at a Time

Experience the perfect blend of  
technology and prestige today!

## Office

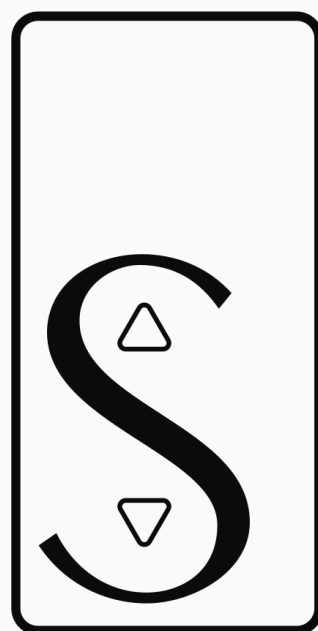
SAIL LIFTS INDIA  
1075, Avinashi Road, Coimbatore,  
Tamil Nadu, India - 641018

## Unit

147, Kaduvettipalayam Village, Karumathampatti,  
Coimbatore, Tamil Nadu, India - 641659

## Contact

Web - [www.saillifts.com](http://www.saillifts.com)  
Mail ID - [saillifts@gmail.com](mailto:saillifts@gmail.com)  
Instagram - [sail.lifts](https://www.instagram.com/sail.lifts)  
Phone - 9942760906 /  
9788850721



SAIL  
LIFTS